

SITE

SHELL BUILDING
FOR A DOLLAR TREE STORE
N HWY 19 & CR 44
EUSTIS, FL 32726

OWNER	ARCHITECT
BYBLOS DEVELOPMENT, INC TOM HARB, P.E 7932 WEST SAND LAKE ROAD SUITE 102 ORLANDO, FLORIDA 32819	INTERPLAN LLC 604 COURTLAND ST, SUITE 100 ORLANDO, FL 32804 PHONE: 407-645-5008 ARCHITECT OF RECORD: LOUISE CRAVER CONTACT: RAFAEL CARBONE
STRUCTURAL ENGINEER	
DANSK CONSULTING INC. 1673 LAKE BALDWIN LAKE ORLANDO, FL 32814 PHONE: 407-252-4425 ENGINEER OF RECORD: BJARNE MADSEN	
MECHANICAL ENGINEER	
PLUMBING ENGINEER	
ELECTRICAL ENGINEER	
INTERPLAN LLC 604 COURTLAND ST, SUITE 100 ORLANDO, FL 32804 PHONE: 407-645-5008 ENGINEER OF RECORD: STACY HENSON	

GOVERNMENTAL AGENCIES

AGENCY:	CITY OF EUSTIS DEVELOPMENT SERVICES
ADDRESS:	10 N. GROVE ST. EUSTIS, FL 32726
CONTACT:	GUY PRIEST
PHONE:	(352) 483-5462
EMAIL:	priestg@ci.eustis.fl.us

The diagram illustrates various symbols used in architectural drawings for identification and reference. These symbols are organized into two columns, each with a list of corresponding labels to its right.

Left Column Symbols and Labels:

- ELEVATION NUMBER:** A circle with a horizontal line through the center.
- SHEET NUMBER:** A circle with a horizontal line through the center.
- DETAIL, SECTION OR OR PLAN NUMBER:** A circle with a horizontal line through the center.
- WALL SECTION NUMBER, BUILDING SECTION LETTER:** A circle with a horizontal line through the center, and a small square with a diagonal line through it to the left.
- SHEET NUMBER:** A circle with a horizontal line through the center.
- DETAIL NUMBER:** A circle with a horizontal line through the center.
- SHEET NUMBER:** A circle with a horizontal line through the center.
- NOTE NUMBER:** A square with a horizontal line through the center.
- WINDOW NUMBER:** A hexagon with a horizontal line through the center.
- DOOR NUMBER:** A circle with a horizontal line through the center.

Right Column Symbols and Labels:

- REVISION NUMBER:** A triangle with a horizontal line through the center.
- INTERIOR FINISH NUMBER:** A circle with a horizontal line through the center.
- EXTERIOR FINISH NUMBER, INTERIOR PARTITION:** A diamond with a horizontal line through the center.
- ROOM NAME:** A rectangle with a horizontal line through the center.
- ROOM NUMBER:** A rectangle with a horizontal line through the center.

Bottom Center Symbol and Label:

- NEW COLUMN GRID NUMBER OR LETTER:** A circle with a horizontal line through the center, and a vertical line extending downwards from the center.
- 116'-0" TRUSS BRG. ELEV. DATUM POINT:** A circle with a horizontal line through the center, and a vertical line extending downwards from the center.

BUILDING CODE:	2017 FBC
PLUMBING CODE:	2017 FPC
ELECTRICAL CODE:	2014 NATIONAL ELECTRICAL CODE
MECHANICAL CODE:	2017 FMC
FIRE & LIFE SAFETY CODE:	2017 FPFC
ENERGY CODE:	2017 FL ENERGY CC
ACCESSIBILITY:	2014 FBC - ACCESSIBLE
CONSTRUCTION CLASSIFICATION:	TYPE II-B - UNPROTECTED
FIRE SPRINKLER SYSTEM:	NO., PER FBC 903.2.7: A FIRE SPRINKLER SYSTEM IS NOT REQUIRED IF TOTAL BUILDING AREA IS LESS THAN 12,000 S.F.
TOTAL GROSS BUILDING AREA = 10,050 S.F.	
(ALLOWED AREA FOR TYPE II-B = 12,500 S.F.)	
ALLOWED BUILDING HEIGHT = 6 FT.	
<u>BUILDING AREAS:</u>	
BUILDING TOTAL (GROSS):	10,050 SQ. FT.
SALES AREA (NET):	7,815 SQ. FT.
STOCKROOM (NET):	1,411 SQ. FT.
OFFICE (NET):	80 SQ. FT.
OCCUPANCY GROUP:	MERCANTILE
OCCUPANCY LOAD:	
SALES:	7,815 S.F. / 30 = 260 OCCUPANTS
STOCKROOM (ACCESSORY OCCUPANCY S-1):	1,411 S.F. / 300 = 5 OCCUPANTS
OFFICE (BUSINESS)	80 S.F. / 100 = 1 OCCUPANT
TOTAL:	266 OCCUPANTS

EGRESS WIDTH REQUIRED:	266 OCCUPANTS X 0.2"/OCCUPANT = 53"
EGRESS WIDTH PROVIDED:	DOOR N1 @ 6'-0" = 68"
	DOOR N2 @ 6'-0" = 68"
	DOOR N3 @ 3'-0" = 34"
	<u>TOTAL WIDTH = 170"</u>

266 OCCUPANTS / 2 = 133 OF EACH SEX				
<u>FIXTURE:</u>	<u>REQUIRED</u>		<u>PROVIDED</u>	
DRINKING FOUNTAIN (1/1000)	1		2	
	MEN	WOMEN	MEN	WOMEN
WATER CLOSET (1/500)	1	1	1	1
LAVATORY (1/750)	1	1	1	1

RISK CATEGORY II = 140 MPH (ULT.)/108 MPH (ASD)

SHT. NO.	DESCRIPTION	SHT. NO.	DESCRIPTION
CS	INDEX, CODE ANALYSIS, LOCATION MAP, LEGEND	S3.2	SECTIONS, DETAILS & SCHEDULES
SD1.0	SITE DETAILS: DUMPSTER ENCLOSURE DETAILS		
			MECHANICAL DRAWINGS
		M0.1	MECHANICAL SPECS NOTES & LEGEND
		M1.0	MECHANICAL FLOOR PLAN
	ARCHITECTURAL DRAWINGS	M2.0	MECHANICAL SCHEDULES
A0.1	LIFE SAFETY PLAN	M3.0	MECHANICAL DETAILS
A1.0	FLOOR PLAN		PLUMBING DRAWINGS
A1.1	REFLECTED CEILING PLAN		
A2.0	EXTERIOR ELEVATIONS	P0.1	PLUMBING NOTES, LEGEND & DETAILS
A2.1	EXTERIOR ELEVATIONS	P1.0	PLUMBING FLOOR PLAN
A3.0	BUILDING & WALL SECTIONS	P1.1	PLUMBING RISERS
A3.1	WALL SECTIONS & DETAILS		ELECTRICAL DRAWINGS
A4.0	ENLARGED OFFICE ROOM & DETAILS	E0.0	ELECTRICAL NOTES & SPECIFICATIONS
A5.0	ENLARGED RESTROOM PLAN & DETAILS	E0.1	NOT USED
A6.0	DOOR SCHEDULE, DETAILS & NOTES	E1.0	ELECTRICAL SITE PLAN
	STRUCTURAL DRAWINGS	E2.0	ELECTRICAL LIGHTING PLAN
S0.1	STRUCTURAL NOTES	E3.0	ELECTRICAL POWER PLAN
S1.1	FOUNDATION PLAN	E4.0	ELECTRICAL DETAILS
S2.1	ROOF FRAMING PLAN	E5.0	E. PANEL SCHEDULES AND RISERS
S3.1	SECTIONS, DETAILS & SCHEDULES	E6.0	NOT USED

[illegible]

- A. IT IS THE CONTRACTOR'S RESPONSIBILITY TO REVIEW ALL DRAWINGS AND SPECIFICATIONS, INCLUDING BUT NOT LIMITED TO ARCHITECTURAL, CIVIL, STRUCTURAL, MECHANICAL, PLUMBING AND ELECTRICAL, PRIOR TO SUBMITTING A BID. PRIOR TO THE MEASUREMENTS TO ARCHITECT OR ENGINEER PRIOR TO BID.
- B. THE MEASUREMENTS ARE BASED UPON MEASURED DRAWINGS AND OTHER INFORMATION PROVIDED BY THE OWNER AS WELL AS NON-INVASIVE SITE VISITS. THE MEASURED DRAWINGS INCLUDE ONLY THOSE ELEMENTS AND SYSTEMS EXPOSED TO VIEW AND HAVE NOT BEEN FIELD VERIFIED. THE CONSTRUCTION DOCUMENTS HAVE BEEN PRODUCED WITHOUT THE BENEFIT OF KNOWLEDGE OF THE EXACT FIELD STRUCTURAL, PLUMBING, MECHANICAL AND ELECTRICAL SYSTEMS.
- C. IT IS THE CONTRACTOR'S RESPONSIBILITY TO FIELD VERIFY ALL EXISTING BUILDING ELEMENTS AND SYSTEMS, FAMILIARIZE THEMSELVES WITH EXISTING CONDITIONS AND SATISFY THEMSELVES AS TO THE NATURE AND SCOPE OF THE WORK. REVIEW THE CONTRACT DOCUMENTS AND NOTIFY THE ARCHITECT OF ANY CONFLICTS AND/OR DISCREPANCIES PRIOR TO BID. THE SUBMISSION OF A BID WILL BE INDICATIVE THAT SUCH AN EXAMINATION HAS BEEN MADE. LATER CLAIMS FOR WORK, EQUIPMENT OR MATERIAL REQUIRE, OR FOR ANY DIFFICULTIES ENCOUNTERED WHICH COULD HAVE BEEN FORESEEN HAD AN EXAMINATION BEEN MADE, WILL NOT BE ALLOWED.
- D. IT IS THE RESPONSIBILITY OF THE CONTRACTOR TO NOTIFY THE ARCHITECT OF ANY DISCREPANCIES ENCOUNTERED ON THE PLANS OR IN EXISTING SITE CONDITIONS PRIOR TO BID.
- E. CONTRACTOR, DURING PRE-BID SITE VISIT, SHALL TAKE NOTICE OF ANY VISUALLY APPARENT CODE VIOLATIONS AND ALLOW IN HIS/HER BID FOR CORRECTING SUCH VIOLATIONS.
- F. CONTRACTORS ARE CAUTIONED TO COORDINATE ITEMS IN THEIR SCOPE OF WORK WITH OTHER TRADES.
- G. THE CONTRACTOR SHALL NOTIFY THE ARCHITECT OF ANY CONFLICTS AND/OR DISCREPANCIES DISCOVERED DURING DEMOLITION AND CONSTRUCTION PHASES OF THE PROJECT.
- H. THESE NOTES APPLY TO ALL SHEETS.

CATEGORY	MANUFACTURER	APPROVAL#	EXPIRATION
STOREFRONT	KAWNEER TRIFAB VG 451T	FL 7237-R8	12-31-21
DOORS-STIRFRNT	KAWNEER TRIFAB VG 451T	FL 7237-R8	12-31-21
DOORS-STEEL	REPUBLIC DL416 SERIES-SINGLE	FL 15869-R3	
DOORS-STEEL	REPUBLIC DL416 SERIES-DOUBLE	FL 15869-R3	
EIFS/STUCCO	STO CORP.	FL 20110-R1	12-31-21

1. METAL BUILDING DETAILS ARE PROVIDED TO SHOW DESIGN INTENT ONLY. PRE-ENGINEERED METAL BUILDING (PEMB) SHALL DETERMINED FINAL DETAILS PROVIDE INTENT INDICATED.
2. REFER TO THE PEMB DOCUMENTS AND SHOP DRAWINGS FOR PROJECT SPECIFIC DETAILS.
3. G.C SHALL COORDINATE PROJECT SPECIFIC METAL BUILDING DETAILS WITH OTHER ELEMENTS OF THE WORK.
4. THE ARCHITECTURAL PLANS ASSUMED AN 8" DEPTH FOR THE PEMB STRUCTURE WITH 2x8" METAL STUD FURRING AT THE INTERIOR WALLS. THERE SHALL BE PROJECTIONS OF COLUMNS AT THE SALES FLOOR WALLS. WHERE NECESSARY, LOCATION AND/OR SIZE OF THE INTERIOR METAL STUDS MUST BE ADJUSTED IN ORDER TO CONCEAL THE COLUMNS. ALSO, DEPENDING ON THE DEPTH OF THE GIRTS, THE SIZE OF THE METAL STUDS MAY BE REQUIRED TO BE REDUCED.

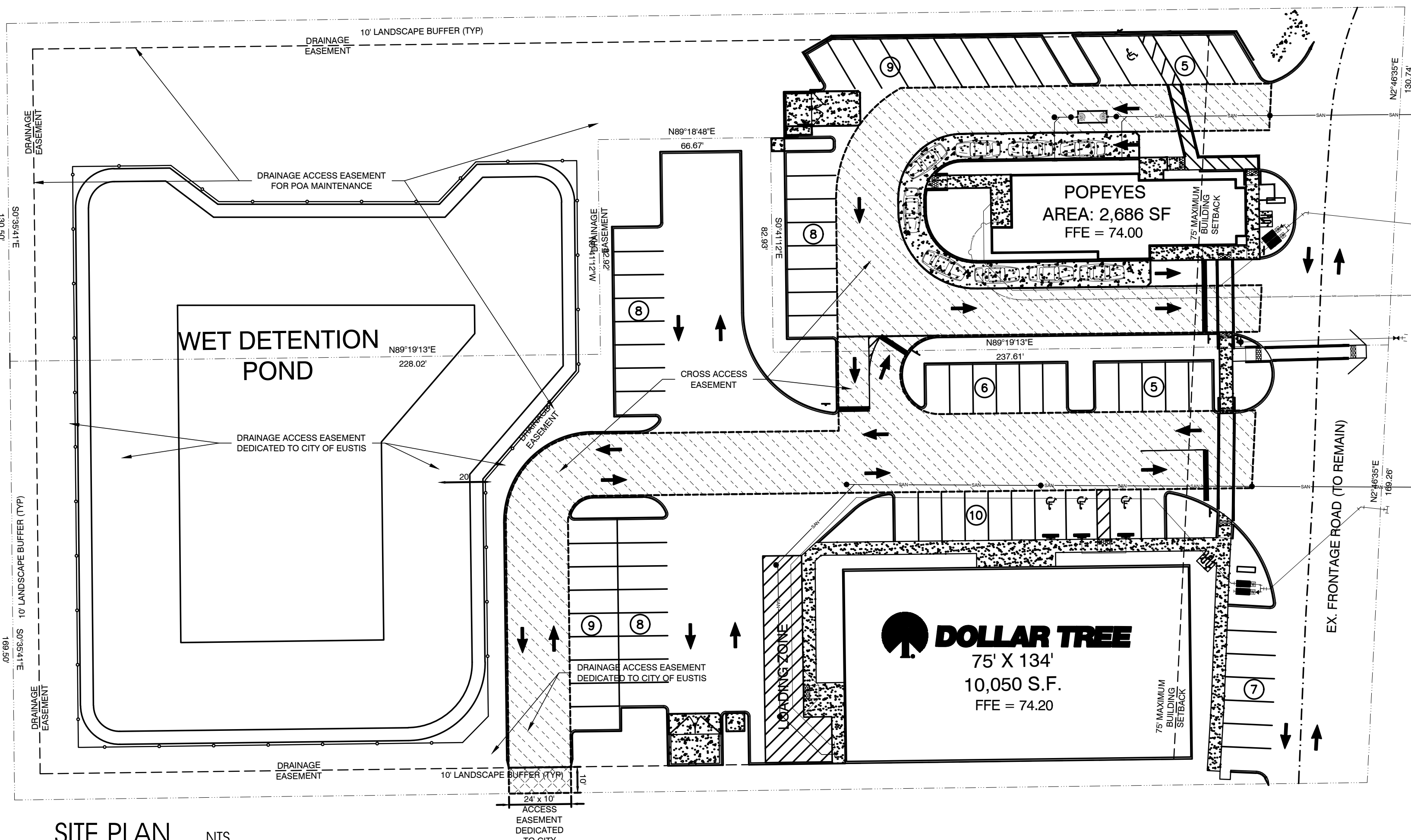
1. MONUMENT SIGN, AWNINGS & CANOPIES, SIGNAGE AND DUMPSTER ENCLOSURE
WILL REQUIRE SEPARATED PERMITS.

ARCHITECTURE
ENGINEERING
INTERIOR DESIGN
PROJECT MANAGEMENT

AA 003420
CA 8660

604 COURTLAND STREET
SUITE 100
ORLANDO, FLORIDA 32804
PH 407.645.5008
FX 407.629.9124

**THIS DOCUMENT IS NOT
FOR REGULATORY
APPROVAL, PERMITTING,
OR CONSTRUCTION.**



SITE PLAN NTS

NORTH

NO	DATE	REMARKS
REVISIONS		

N HWY 19 & CR 44
EUSTIS, FL

PROJECT NO: 2018.0328
DATE: 08-27-2018

CS
COVER SHEET

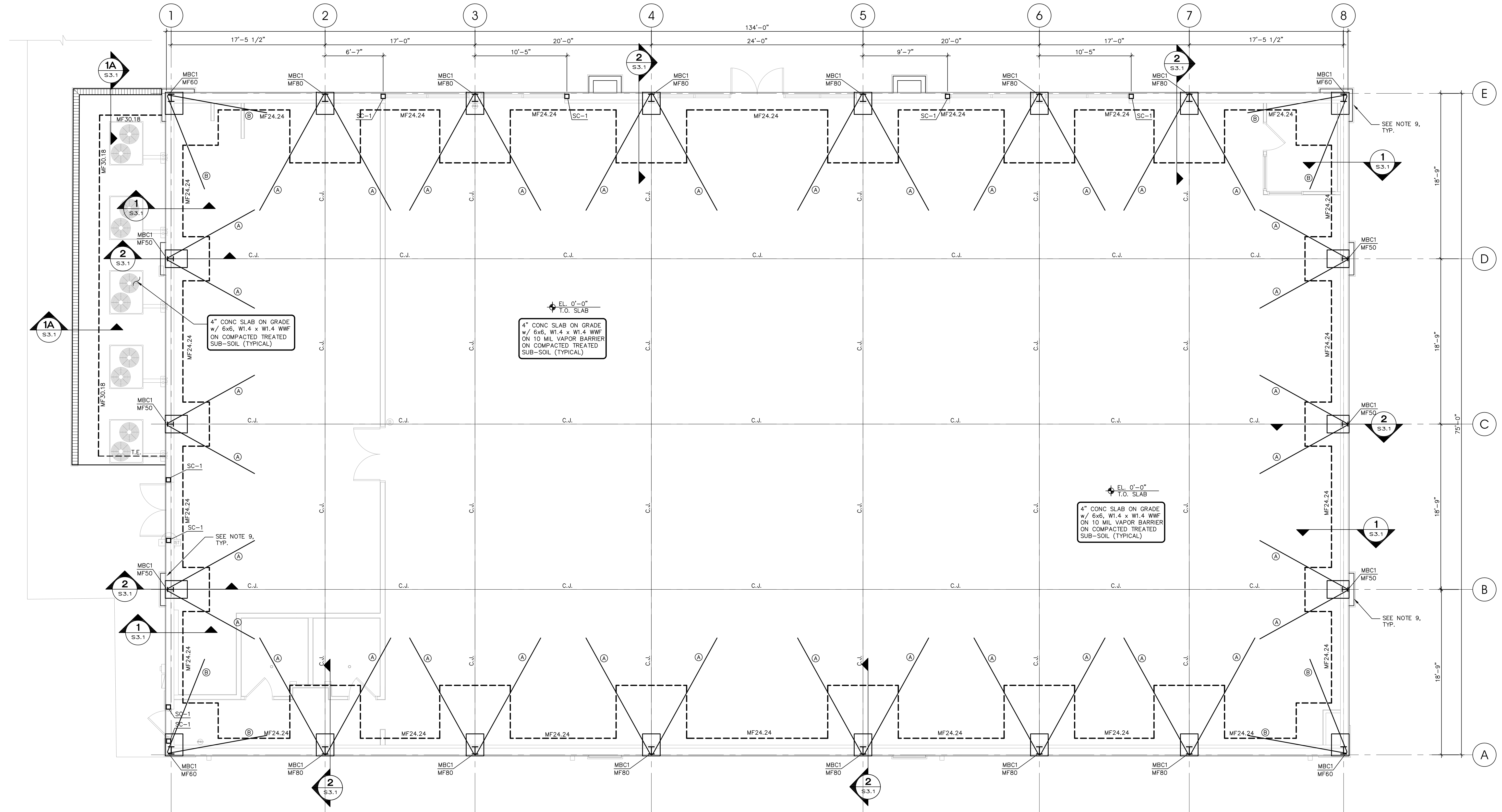
CHECKED: RC DRAWN: MS

© 2018 INTERTECH, INC. ALL RIGHTS RESERVED. THIS DOCUMENT IS THE PROPERTY OF INTERTECH, INC. AND IS NOT TO BE REPRODUCED OR TRANSMITTED IN ANY FORM OR BY ANY MEANS, ELECTRONIC OR MECHANICAL, INCLUDING PHOTOCOPYING, RECORDING, OR BY ANY INFORMATION STORAGE AND RETRIEVAL SYSTEM, WITHOUT PERMISSION IN WRITING FROM INTERTECH, INC.

SEAL:

**THIS DOCUMENT IS NOT
FOR REGULATORY
APPROVAL, PERMITTING,
OR CONSTRUCTION.**BJARNE MADSEN, P.E.
FL 586831673 LAKE BALDWIN LANE
ORLANDO, FLORIDA 32814
PH. (407) 252-4225
LIC EB28029
PROJECT # IP18-22NO DATE REMARKS
REVISIONS**SHELL BUILDING
for DOLLAR TREE**N HWY 19 & CR 44
EUSTIS, FLPROJECT NO: 2018.0328
DATE: 08-13-2018**S1.1**
FOUNDATION PLAN

CHECKED: BM DRAWN: RED



STEEL COLUMN SCHEDULE

MARK	SIZE	BASE P	ANCHOR BOLTS
SC-1	6x6x5/16	12x12x1	(4) 3/4"Ø

PROVIDE 1/2 CAPPLATE AND WELD W/ 3/16 TO HSS GIRT.

FOOTING SCHEDULE

MARK	DIMENSIONS	REINFORCEMENT
MF24.24	2'-0" X 24" X CONT. MONO	(3)#5 CONT. BOTTOM
MF30.18	3'-0" X 18" X CONT. MONO	(3)#5 CONT. BOTTOM
MF50	5'-0" X 5'-0" X 24"	(6) #6 E.W. BOTTOM
MF60	6'-0" X 6'-0" X 24"	(7) #6 E.W. BOTTOM
MF80	8'-0" X 8'-0" X 24"	(9) #6 E.W. BOTTOM

CONCRETE SLAB NOT TO HAVE A
SLOPE OF MORE THAN 1/4" PER FOOT
IN TEN (10) FEET

MASONRY WALL SCHEDULE

MARK	THICKNESS	REINFORCING
MW-1	8" CMU	#5 @ 48" O.C.(CENTERED)

MASONRY WALL NOTES:

- WALL SEGMENTS SHALL BE REINFORCED WITH 9 GA. GALVANIZED LATERAL REINFORCING @ 16" O.C. HORIZ. EXTEND REINFORCING 6" INTO POURED ELEMENTS AND AROUND ENCASED STEEL.
- ALL MASONRY REINFORCED CELLS SHALL BE FILLED WITH 3000 PSI GROUT MIX.

METAL BLDG. COLUMN
REACTION SCHEDULE

COLUMN MARK	ANCHOR BOLTS	V _{dn} (KIPS)	H (KIPS)	V _{up} (KIPS)
MBC1	SEE NOTE 1	25	20	25

NOTES:

- SEE METAL BUILDING DRAWINGS FOR ANCHOR BOLT DIAMETERS AND ANCHOR BOLT PROJECTION LENGTH.
A. 1" DIA. BOLTS SHALL HAVE 15" MIN. EMBED AND 3" HOOK.
B. 3/4" DIA. BOLTS SHALL HAVE 12" MIN. EMBED AND 3" HOOK.
C. 5/8" DIA. BOLTS SHALL HAVE 10" MIN. EMBED AND 3" HOOK.
D. 1/2" DIA. BOLTS SHALL HAVE 8" MIN. EMBED AND 3" HOOK.
- ANCHOR BOLTS SHALL BE A36 OR A307.
- V_{dn} DENOTES DOWNWARD VERT. REACTION
H DENOTES HORIZONTAL REACTION
V_{up} DENOTES VERTICAL NET UPLIFT REACTION

FOUNDATION NOTES:

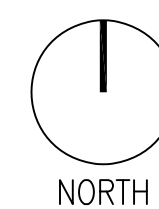
- ELEV. ±0'-0" IS REFERENCE ONLY. SEE CIVIL FOR TRUE NGVD ELEVATION.
- C.J. INDICATES CONTROL JOINT SEE S3.1 FOR DETAILS.
- VERIFY SLOPES AND STEPS WITH ARCH'L PRIOR TO CONSTRUCTION. SEE TYPICAL STEP DETAIL ON S3.1.
- MF-# INDICATES MONOLITHIC CONCRETE FOOTINGS, SEE SCHEDULE ON THIS SHEET.
- MBC# DENOTES METAL BUILDING COLUMN BASE TYPE. SEE THIS SHEET FOR SCHEDULE INDICATING COLUMN ANCHOR BOLTS AND DESIGN REACTIONS.
- (A) DENOTES (1) #5 X 15'-0" LG. HAIRPIN
(B) DENOTES (1) #5 X 10'-0" LG. HAIRPIN
- SC-# DENOTES STEEL COLUMN TYPE. SEE SCHEDULE ON THIS SHEET.
- PROVIDE MINIMUM 8" THICK CONCRETE SLAB/FOOTING UNDER PILASTERS. PROVIDE #5 AT 12" O.C. E.W.
- (FILL) INDICATES FILLED CELL. ALL MASONRY WALLS ARE MW-1 U.N.O., SEE SCHEDULE ON THIS SHEET FOR SIZE AND SPACING OF REBAR.
- INDICATES WALL CONTROL JOINT, SEE DETAIL ON S3.1.
- T.E. DENOTES THICKENED EDGE, SEE DETAIL ON S3.1.

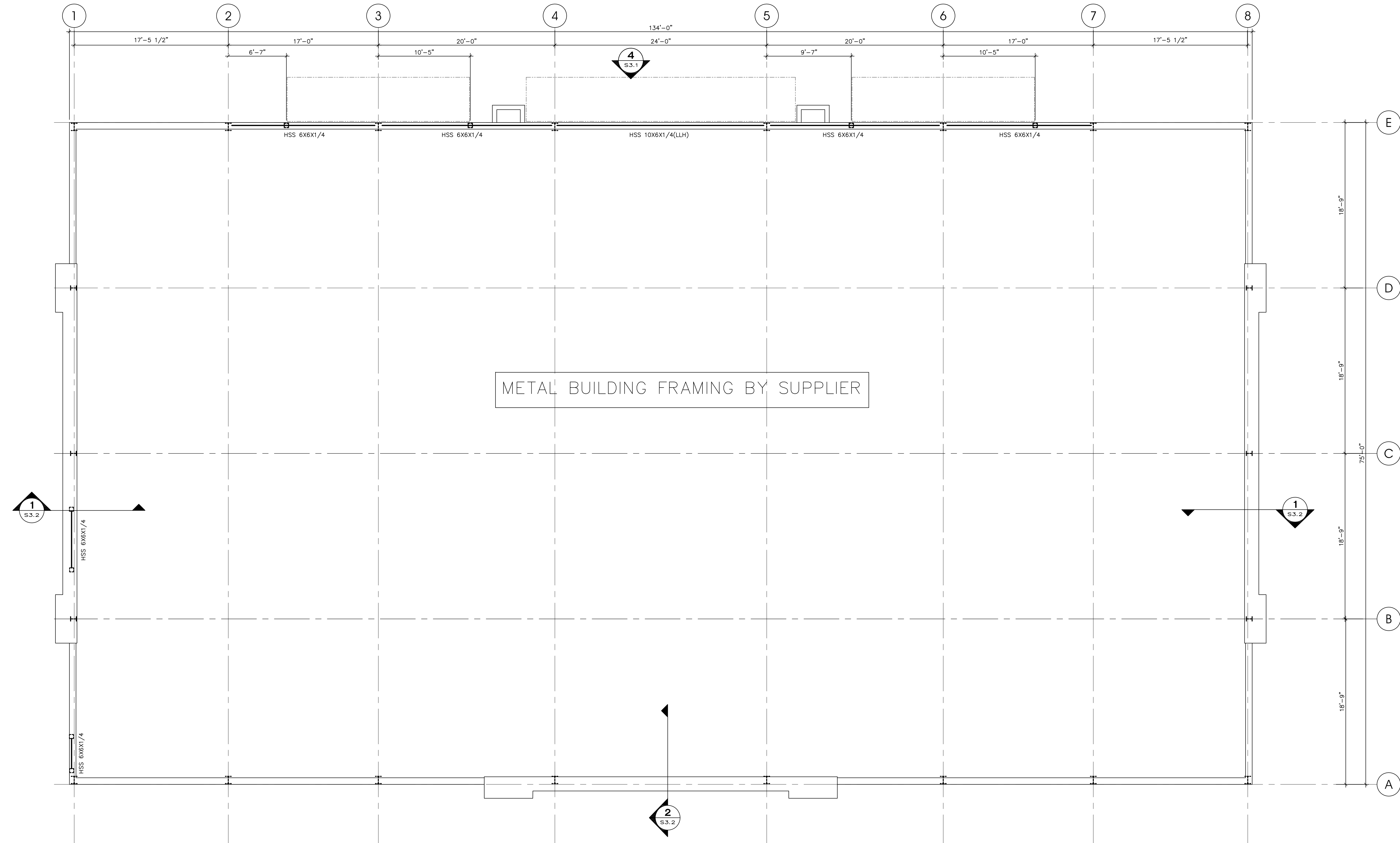
GENERAL CONTRACTOR NOTE :

DO NOT SCALE DRAWINGS!
COORDINATE DIMENSIONS BETWEEN STRUCTURAL AND ARCHITECTURAL DRAWINGS - NOTIFY STRUCTURAL ENGINEER AND ARCHITECT OF ANY DISCREPANCIES BEFORE PROCEEDING WITH WORK.

1 FOUNDATION PLAN

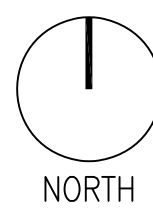
3/16"-1'-0"





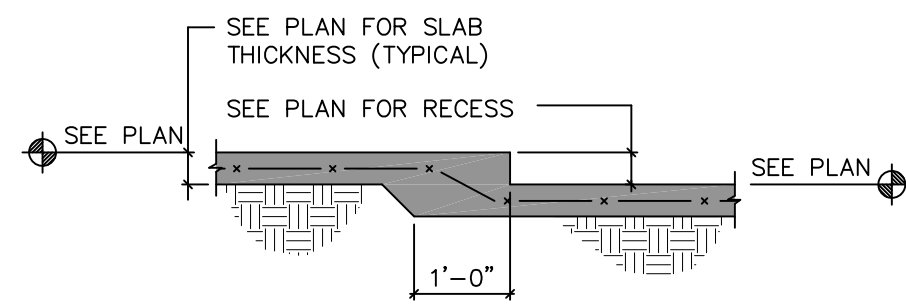
1 ROOF FRAMING PLAN

3/16"-1'-0"

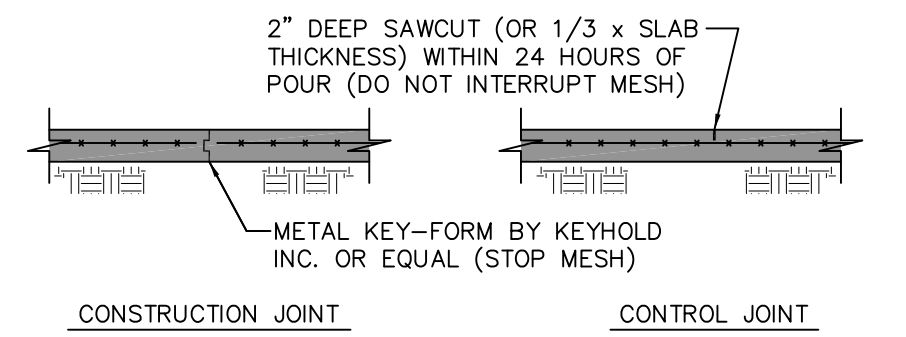


GENERAL CONTRACTOR NOTE :
DO NOT SCALE DRAWINGS !
COORDINATE DIMENSIONS BETWEEN STRUCTURAL AND
ARCHITECTURAL DRAWINGS - NOTIFY STRUCTURAL
ENGINEER AND ARCHITECT OF ANY DISCREPANCIES
BEFORE PROCEEDING WITH WORK.

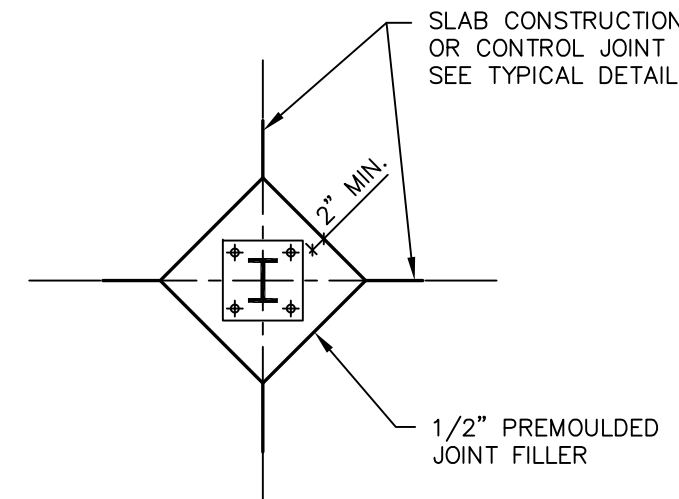
EXTERIOR CEILING & SOFFIT FRAMING NOTES:
1. REFER TO ARCH'L DWG'S FOR LOCATIONS, HEIGHT,
AND PROFILE OF THE CEILING SOFFITS.
2. PROVIDE FRAMING AND BRIDGING AS NEEDED BUT
NOT LESS THAN 4"-20GA. @ 16"o.c.
3. REFER TO ARCH'L FOR FINISHES AND FOR WIND
SUCTION & PRESSURES AS PER APPLICABLE CODE
BUT NOT LESS THAN 40 PSF.
4. SUBMIT SIGNED AND SEALED SHOP DWG'S AND
CALCULATIONS PRIOR TO CONSTRUCTION.



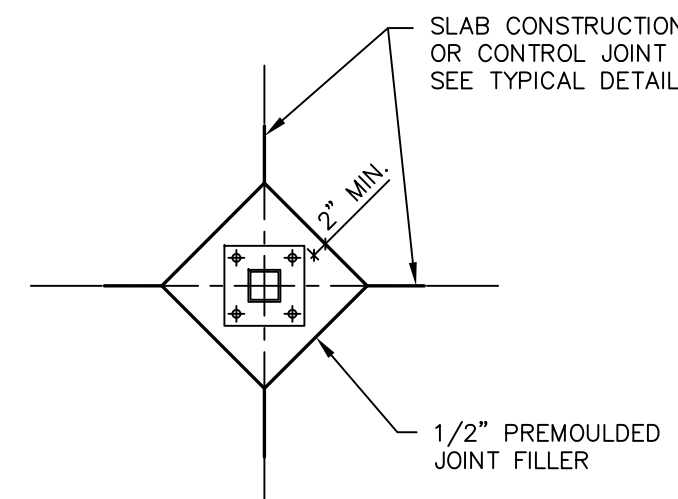
TYPICAL SLAB RECESS
N.T.S.



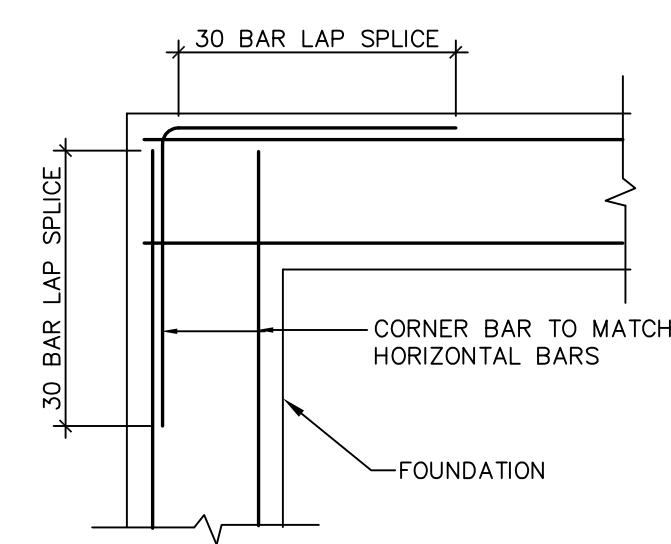
TYPICAL SLAB-ON-GRADE
NOTE: CONTROL JOINTS/CONSTRUCTION JOINTS SHALL CREATE PANELS OF 400 SQ. FEET (MAXIMUM)
N.T.S.



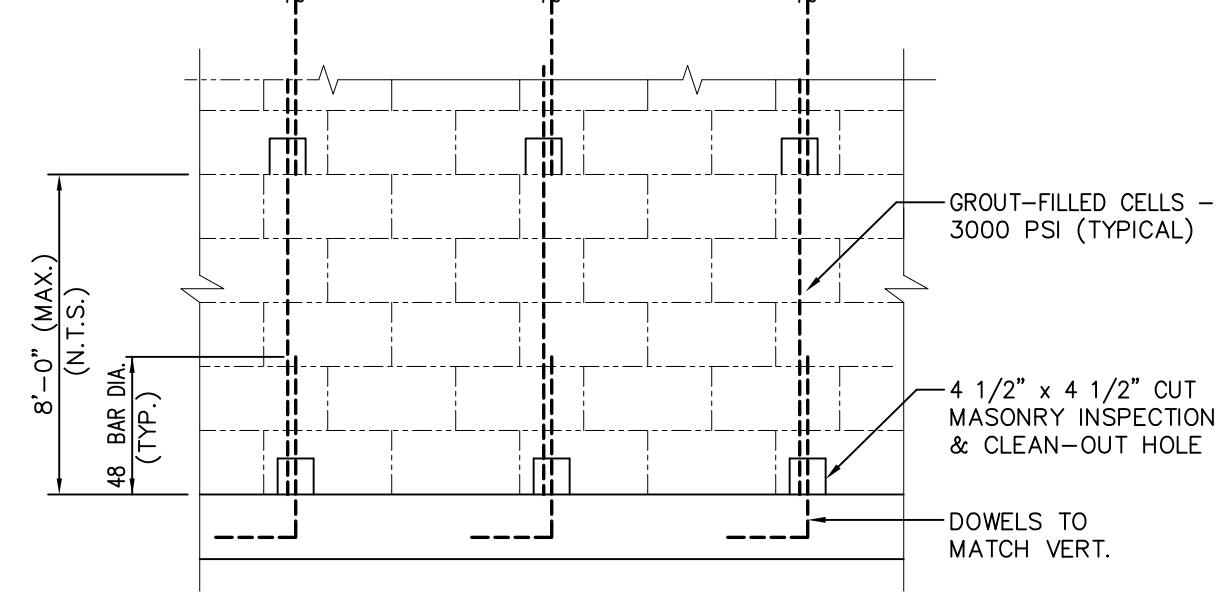
AT STEEL COLUMN



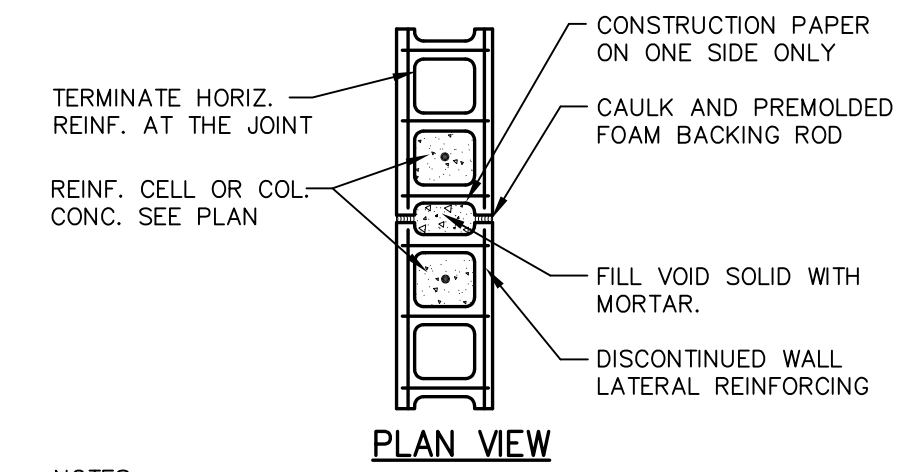
AT STEEL TUBE COLUMN



TYPICAL CORNER BAR DETAILS
N.T.S.

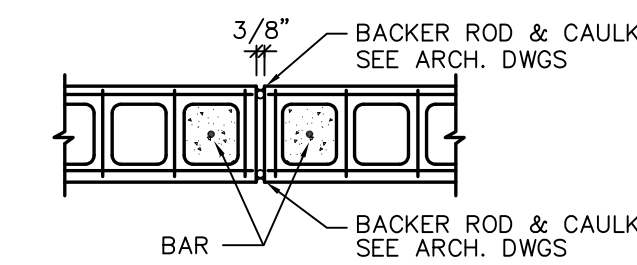


TYPICAL MASONRY FILLED CELL DETAIL
N.T.S.



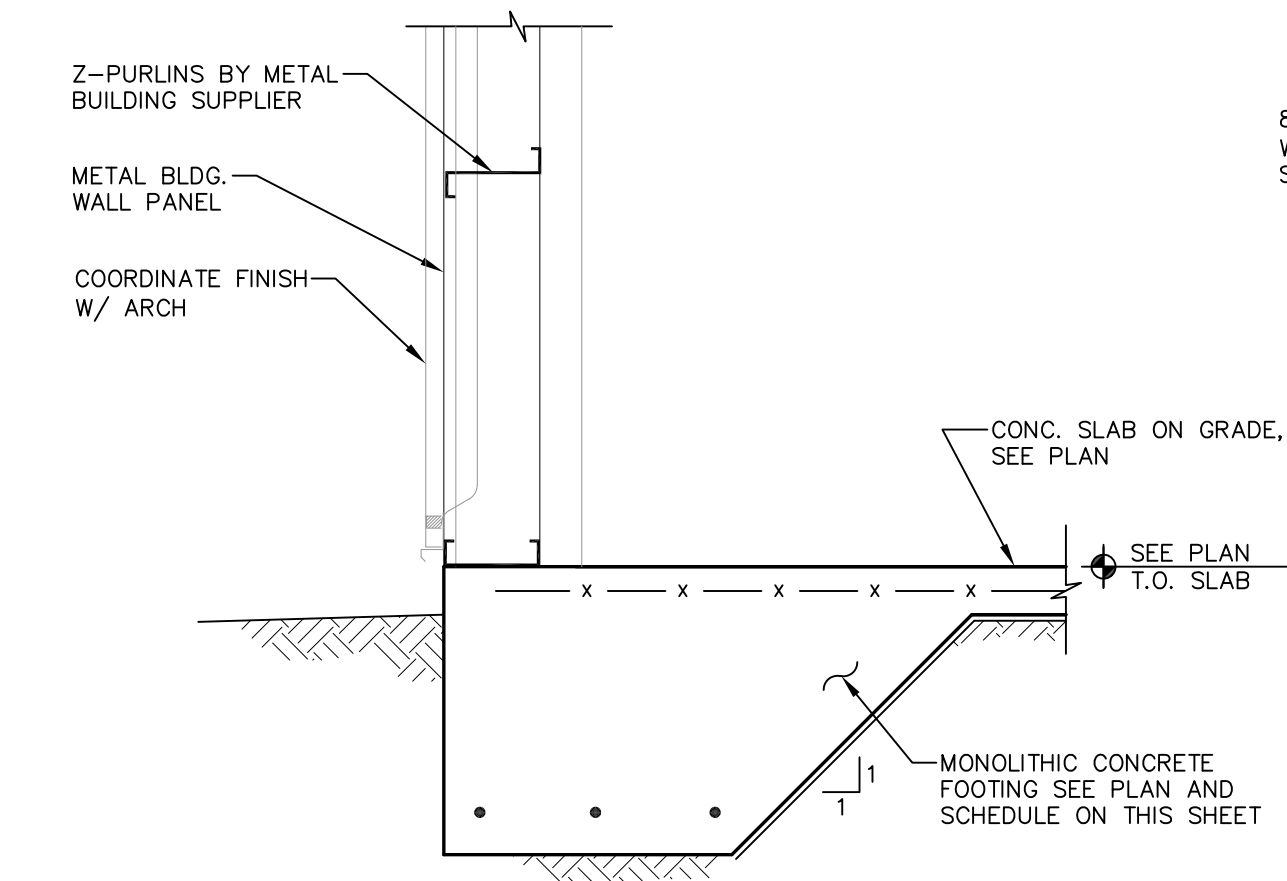
PLAN VIEW

- NOTES:
- 1.- SAW CUT BOND BEAMS, TIE BEAMS 1" DEEP TO CONTINUE WALL CONTROL JOINT TO TOP OF WALL.
 - 2.- CONTROL JOINT SPACING IS NOT TO EXCEED 25'-0" o.c. IN WALLS WITH MORE THAN 25'-0" OF UNINTERRUPTED MASONRY. REFER TO DWG'S. FOR ADDITIONAL SPECIFIED LOCATIONS AS NOTED THUS (WCJ).
 - 3.- CONTINUE ALL BOND BEAMS, TIE BEAMS REINF. THROUGH THE JOINT.

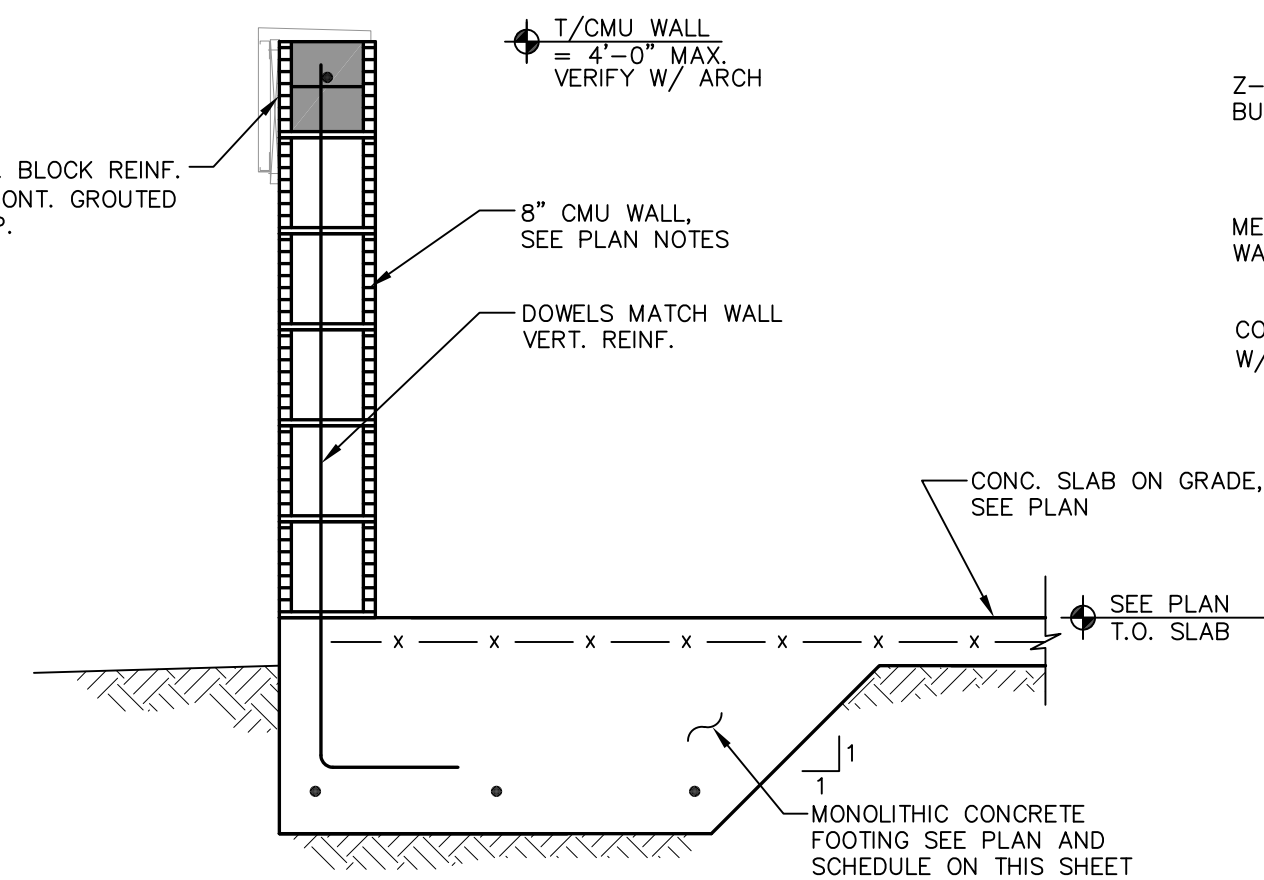


ALTERNATE METHOD

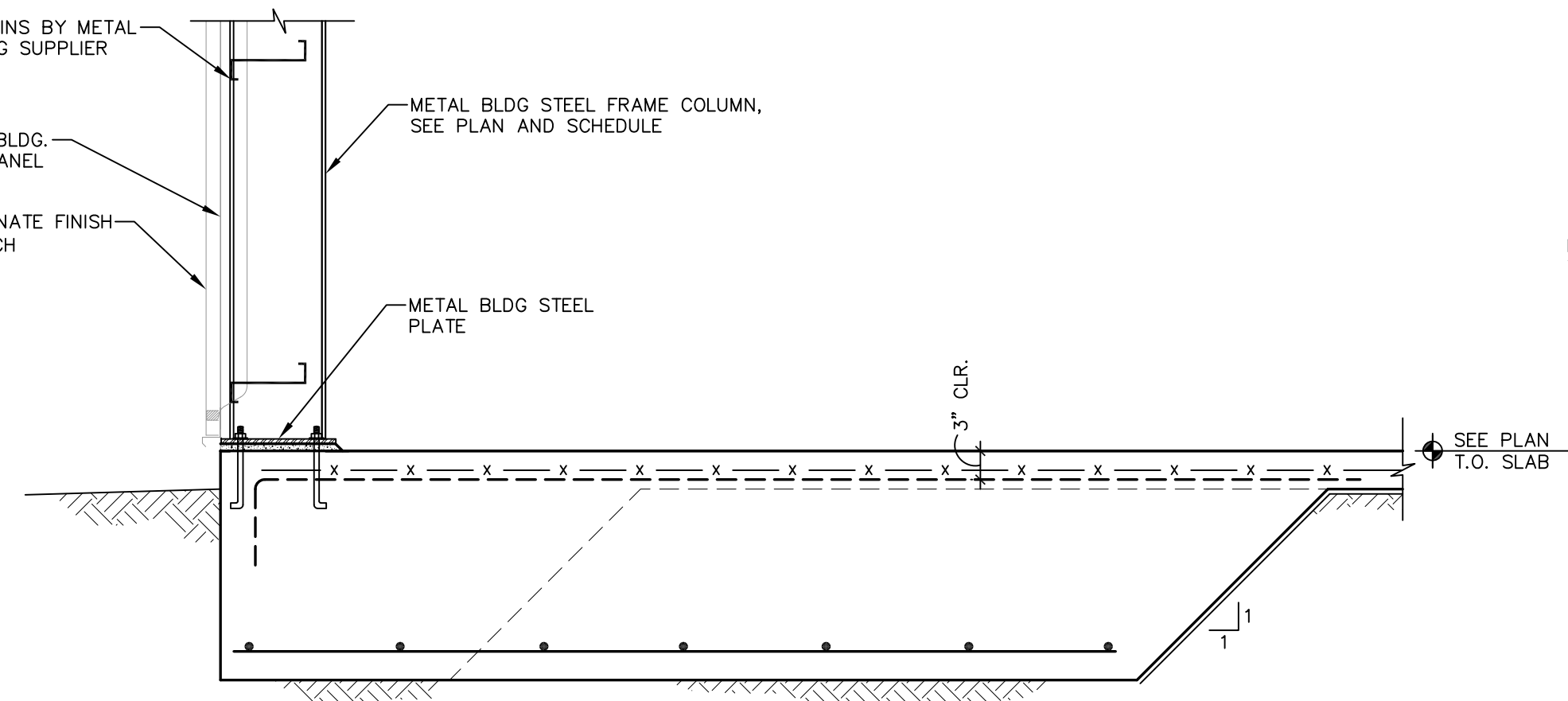
CMU WALL CONTROL JOINT (WCJ) DETAIL
N.T.S.



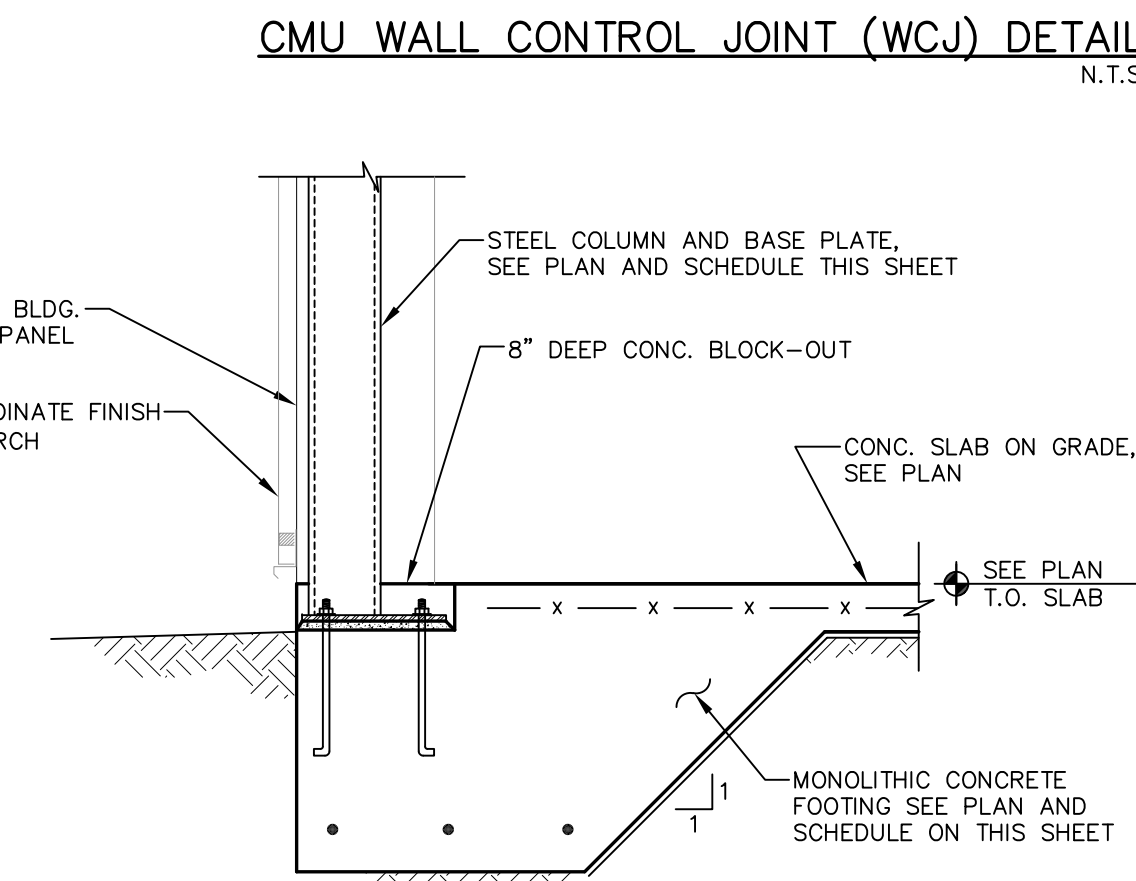
SECTION 1
3/4" = 1'-0"



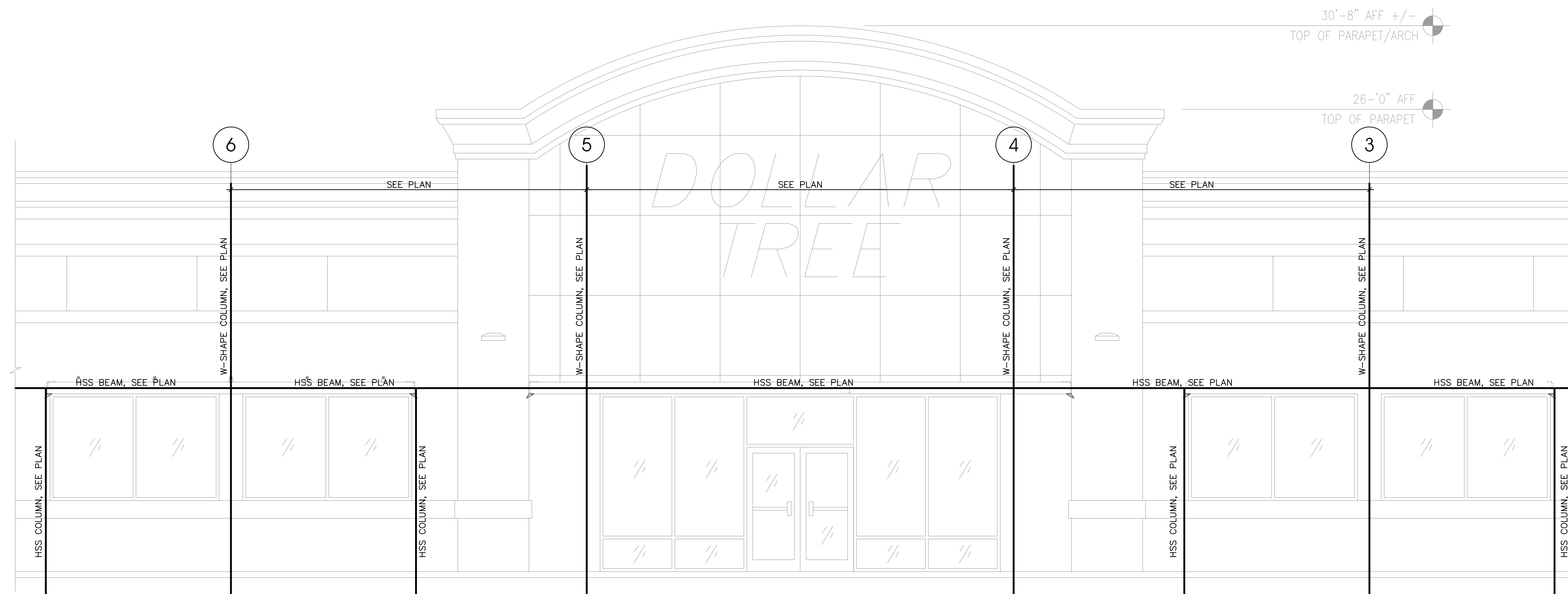
SECTION 1A
3/4" = 1'-0"



SECTION 2
3/4" = 1'-0"



SECTION 3
3/4" = 1'-0"



ELEVATION AT GRID E
1/4" = 1'-0"

